

[www.cantronics.com](http://www.cantronics.com)

## Overview

The CSI-IR series of infrared illuminators for CCTV applications is designed to produce clear night vision images for security surveillance. Cantronic's proprietary design allows for evenly distributed illumination with viewing distances over 200 meters (660ft). Another advantage of these Illuminators is the low power consumption, ranging from 6W to 55W only. The CSI-IR infrared illuminators are weather resistant and come in 850nm (semi-covert) or 940nm (covert) wavelength versions.

The result of these innovations is a high-performance infrared illuminator that delivers the farthest viewing distance and longest life of any infrared illuminator currently available on the market. The CSI-IR series of illuminators can be purchased separately or as part of a complete infrared CCTV camera system. They can also be retrofitted to existing CCTV cameras.

## Outstanding Features

- Illumination distance range up to 200m (660ft)
- Available in semi-covert (850nm) and covert (940nm) wavelength
- Available in 30° and 60° illumination angle
- Constructed in light weight rugged extruded aluminum weatherproof housing
- Long lifespan LED of 10,000+ hours
- Automatic ON/OFF photocell control as standard for 30m, 50m, 100m & 200m models
- Produce no infrared glare
- Operating temperature range -30 °C to 55 °C
- Available in industry standard 24VAC, 24VDC or 110/220 VAC power input

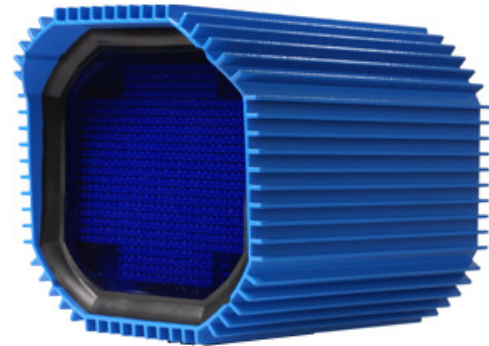
## Dimensional Diagram

Housing Type	Dimension A x B x C
1*	69 x 69 x 89 mm (2.7" x 2.7" x 3.5")
2	130 x 130 x 165 mm (5.1" x 5.1" x 6.5")
3	130 x 130 x 195 mm (5.1" x 5.1" x 7.8")
4	130 x 130 x 215 mm (5.1" x 5.1" x 8.5")
5	165 x 165 x 215 mm (6.5" x 6.5" x 8.5")

\* Type 1 Housing is in different shape.

## Product Image

CSI-IR Infrared Illuminator



## Applications

- Night time or Covert Surveillance
- Airport Perimeter
- Government Facilities
- Border and Harbor Patrols
- Prison Surveillance
- Police Surveillance
- Facilities that require a high level of security

## Performance Options & Accessories

- Mounting Bracket, support up to 9kg (20lbs)
- Power Adapter AC to AC or AC to DC
- Integrated with CIRP CCTV Camera System for viewing distance up to 800m

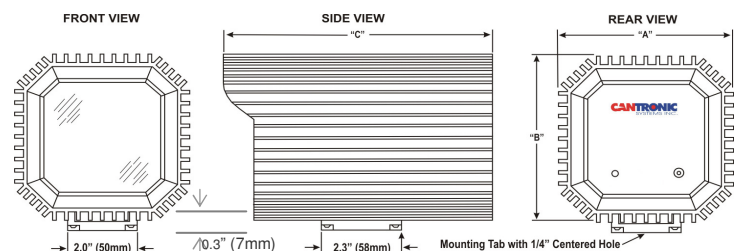
## Certifications / Compliance

CSA Standard C22.2 (No 250.0-00) Luminares

UL Standard No 1598 Luminares

US Patent #6902299B2 Illuminators

Other Patents Pending



### Specifications

Model	Illumination Distance	Angle	LED	Input Voltage	Power	Weight kg (lbs)	Housing Type
Semi-Covert (850nm wavelength)							
CSI-IR18m30	18m (60ft)	30°	42	12VDC	6W	0.4 (0.9)	1
CSI-IR30m30	30m (100ft)	30°	90	24VAC, 24VDC	12W	1.2 (2.6)	2
CSI-IR30m60	30m (100ft)	60°	150	24VAC, 24VDC	20W	1.3 (2.9)	3
CSI-IR50m30	50m (165ft)	30°	150	24VAC, 24VDC	20W	1.3 (2.9)	3
CSI-IR50m60	50m (165ft)	60°	300	24VAC, 24VDC, 110/220VAC	30W	1.5 (3.3)	4
CSI-IR100m30	100m (330ft)	30°	300	24VAC, 24VDC, 110/220VAC	30W	1.5 (3.3)	4
CSI-IR100m60	100m (330ft)	60°	588	24VAC, 110/220VAC	55W	1.9 (4.2)	5
CSI-IR200m30	200m (660ft)	30°	588	24VAC, 110/220VAC	55W	1.9 (4.2)	5
Covert (940nm wavelength)							
CSI-IR30m30N	30m (100ft)	30°	150	24VAC, 24VDC	20W	1.3 (2.9)	3
CSI-IR30m60N	30m (100ft)	60°	300	24VAC, 24VDC, 110/220VAC	30W	1.5 (3.3)	4
CSI-IR50m30N	50m (165ft)	30°	300	24VAC, 24VDC, 110/220VAC	30W	1.5 (3.3)	4
CSI-IR50m60N	50m (165ft)	60°	588	24VAC, 110/220VAC	55W	1.9 (4.2)	5
CSI-IR100m30N	100m (330ft)	30°	588	24VAC, 110/220VAC	55W	1.9 (4.2)	5

### How to Order

#### CSI-IR100m30 – 24AC

Model  
See above for details

Input Voltage  
12DC : 12VDC  
24AC : 24VAC  
24DC : 24VDC  
110/220 : 110V or 220VAC



CIRP-800M System



Application Examples:

Pictures shown with optional mounting brackets and CIRP-800M CCTV Camera System



Schedule

\*on selected models

Specifications subject to change without notice

© Copyright Cantronic Systems Inc. 2007 ISO9001 Certified

## Cantronic Systems Inc.

[www.cantronics.com](http://www.cantronics.com)

63A Clipper Street

Coquitlam, BC V3K 6X2, Canada

Telephone: +1.604.516.6667

Facsimile: +1.604.516.6618

Toll Free: +1.866.391.6970

Email: [irsales@cantronics.com](mailto:irsales@cantronics.com)

Dealer/Distributor